

## 2024-2025 Sailing Instructions Supplement

### **Motiti Karewa Race**

**Saturday 29th March 2025**

These instructions are to be read in conjunction with the TYPBC 2024-2025 Sailing Instructions Booklet.

#### 1. ENTRY

Please complete the following:

- Motiti Karewa Race entry form at [Keelers](#) webpage
- Pay the entry fee of \$20
- See Section 7 below regarding Cat 4+ Safety requirements.
- Read the briefing email that will be sent the night before the race
- Sign on at the TYPBC Clubrooms or with the race officer on VHF77 before the 5 minute warning signal

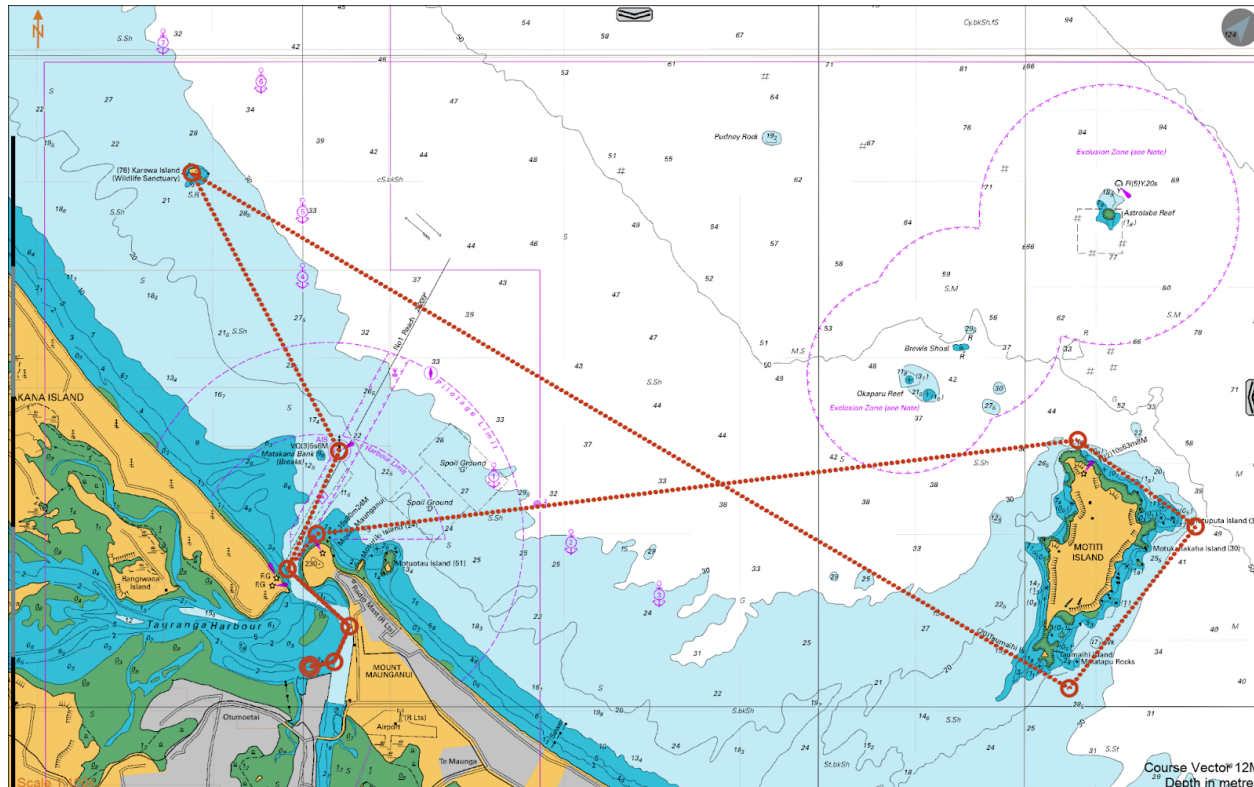
This race is being run simultaneously with the MMYC. Competitors are able to enter one or both races. Each club will have separate handicaps and results. Sailing instructions and entry forms for the Three islands Race are at: [mmyc.org.nz](http://mmyc.org.nz)

#### 2. COURSE

The course is as follows:

TYPBC Clubhouse start, 17(p), Motiti (s), Karewa (p), A beacon (s), 17(s), TYPBC Clubhouse finish.

See also clause 5 for a shorter course that may be sailed if conditions do not support the above course.



The racing area will be within the confines of the coastal area around Karewa, and Motiti Islands. As per clause 3 in the [TYPBC 2024-2025 Sailing Instructions](#), the Motiti Island mark includes all outlying rocks

and islets, this includes Taumaihi Island, Matatapu (Black) Rocks and Motukahakaha Island. Note that skippers will be required to maintain a GPS track which may be inspected by the Race Committee.

### 3. START

TYPBC Clubhouse start at 0800hrs, as per 9.2 in the [TYPBC 2024-2025 Sailing Instructions](#). A 5 minute warning signal will be given at 0755hrs. If there is light wind, the start may be moved to A beacon at 0900hrs. Competitors will be advised on VHF77 from 0730hrs.

### 4. FINISH

The finish line will be a clubhouse finish, taking your own time as per 11.2 in the [TYPBC 2024-2025 Sailing Instructions](#).

Take your own finish time in UTC+13 with an accurate instrument such as your GPS or <https://time.is/> on your mobile.

#### **Finish Declaration (as per General SI's section 12.0):**

The procedure for submitting a finishing declaration shall be the completion of the online form on the Keeler page of the TYPBC website (<https://yacht.org.nz/sailing/keelers>). Select 'Click here to fill out a finish Declaration' and complete the required information as follows:

- A. The name of the race.
- B. The boat's name and sail number.
- C. The skipper's name.
- D. The time, which must be taken from a GPS (specifying New Zealand Standard Time (NZST) or New Zealand Daylight Time (NZDT) where applicable), and date that the boat finished the race.
- E. A declaration that the boat completed, or did not complete, the course in accordance with all the rules.
- F. The name of the boat immediately ahead and the name of the boat immediately behind at the finish and their approximate finish times. (Not compulsory)

Finishing declarations must be made within two hours of your finish time to allow timely compilation of the results by the R.O.

Boats failing to comply with the finishing declaration instruction shall be treated as DNF.

### 5. SHORTER COURSE

If weather conditions dictate the course will be shortened to: TYPBC Clubhouse start, 17(p), Motiti (s), A beacon (p), 17(s), TYPBC Clubhouse finish. The shorter course will be advised by the race officer on VHF77 and by text message to the skippers before the leading boats get around the bottom of Motiti.

### 6. COMMUNICATION

Race communications will be on VHF channel 77. Please monitor channel 16 using the dual function on your VHF and use channel 16 for all emergencies.

### 7. SAFETY

All skippers are reminded that it is their decision alone on whether or not to race and whether their boat and crew are up to the expected conditions..

All crews are reminded that they need to have MOB and abandon ship procedures in place so the procedures can be carried out in a timely manner if required.

All skippers are reminded that they need to comply with a minimum of the TYPBC category 4+ safety requirements and amendments to compete in this race. The Category 4+ requirements are outlined in "2024 -2025 SAILING INSTRUCTIONS" posted on the keeler web page and available at the TYPBC clubrooms. They include all the general TYPBC safety requirements, Yachting NZ category 4 requirements and the TYPBC Attachment A requirements.

The TYPBC Keelers Committee will do safety inspections on all competitors prior to the start if they have not already had one for the season.

#### **8. RETIREMENT**

If a boat wishes to retire from the race they must notify and receive acknowledgement from the on water contact on VHF77 or by phone call. Also they need to advise their intentions after retirement and submit the online finish declaration with "did not complete the course".

#### **9. RESULTS**

Results will be calculated on TYPBC outside handicap and PHRF Offshore for boats with a current certificate. Results will be posted on the TYPBC keelers page as soon as possible following the race.

#### **10. PRIZEGIVING**

Prizegiving will be held at TYPBC on Wednesday 2nd April following the Wednesday night race.