



# 2021 New Zealand International Tornado National Championship

12<sup>th</sup>, 13<sup>th</sup>, 14<sup>th</sup> March 2021

**Organising Authority:**  
**TAURANGA YACHT AND POWER BOAT  
CLUB(Inc)[TYPBC]**

PO Box 14352, Tauranga 3143. NEW ZEALAND  
Phone (64) 07 578 5512 Fax 07 578 5595  
Email office@yacht.org.nz

## SAILING INSTRUCTIONS

NB: The notation '[DP]' in a rule in the SI means that the penalty for a breach of that rule may, at the discretion of the protest committee, be less than disqualification.

### 1 RULES

- 1.1 The regatta will be governed by the rules as defined in *The Racing Rules of Sailing*.
- 1.2 The Yachting New Zealand Safety Regulations Part 1 shall apply.
- 1.2 The Tornado class rules will apply.
- 1.3 Appendix T, *Arbitration*, will apply.
- 1.4 Racing rule 61.1(a) will be changed as follows: The Tornado class are exempt from Displaying a Protest Flag

### 2 NOTICES TO COMPETITORS

Notices to competitors will be posted on the official notice board located down stairs at TYPBC.

### **3 CHANGES TO SAILING INSTRUCTIONS**

Any change to the sailing instructions will be posted before 1000hrs on the day it will take effect, except that any change to the schedule of races will be posted by 2000hrs on the day before it will take effect.

### **4 SIGNALS MADE ASHORE**

**4.1** Signals made ashore will be displayed on the club house flagpole.

**4.2** A boat shall not go afloat until flag D is displayed ashore. The warning signal will not be made before the scheduled time or less than 60 minutes after flag D is displayed.

### **5 SCHEDULE OF RACES/CLASS FLAGS**

**5.1** Schedule of Racing:

Day/Date:	Class:	Class Flag:	No of Races:	Time of First Warning Signal:
12 <sup>th</sup> March 2021	Tornado	White flag black Tornado emblem	1(Practice)	1500hrs
13 <sup>th</sup> March 2021	Tornado		4	1200hrs
14 <sup>th</sup> March 2021	Tornado		4	1200hrs

One extra race per day may be sailed, provided that no class becomes more than one race ahead of schedule and the change is made according to SI 3.

**5.2** To alert boats that a race or sequence of races will begin soon, the orange starting line flag will be displayed with one sound at least five minutes before a warning signal is made.

**5.3** On the last scheduled day of racing no warning signal will be made after 1700hrs.

### **6 RACING AREAS**

Attachment A shows the location of racing areas.

### **7 THE COURSES**

**7.1** The diagrams in Attachment B show the courses, including the approximate angles between legs, the order in which marks are to be passed, and the side on which each mark is to be left.

**7.2** No later than the warning signal, the race committee signal vessel will display the approximate compass bearing of the first leg.

### **8 MARKS**

**8.1** Mark descriptions are as follows:

<b>Mark:</b>	<b>Description:</b>	<b>Alternate mark description:</b>
1	A yellow cylindrical buoy approx. 1.2 meters high.	A red cylindrical buoy approx. 1.2 meters high.
2	A yellow cylindrical buoy approx. 1.2 meters high.	
3P	A yellow cylindrical buoy approx. 1.2 meters high.	
3S	A yellow cylindrical buoy approx. 1.2 meters high.	
Start - starboard end	Committee vessel	
Start - port end	A round red buoy	
Finish - starboard end	Committee vessel	
Finish - port end	A round red buoy	

**8.2** A race committee vessel signalling a change of a leg of the course is a mark as provided in SI 10.2.

## **9 STARTS**

**9.1** The starting line will be between a staff displaying an orange flag on the starting mark at the starboard end and the course side of the port-end starting mark.

**9.2** A boat that does not start within 4 minutes after her starting signal will be scored Did Not Start without a hearing. This changes RRS A4 and A5.

## **10 CHANGE OF THE NEXT LEG OF THE COURSE**

**10.1** To change the next leg of the course, the race committee will lay a new mark (or move the finishing line) and remove the original mark as soon as practicable. When in a subsequent change a new mark is replaced, it will be replaced by an original mark.

**10.2** Except at a gate, boats shall pass between the race committee vessel signalling the change of the next leg and the nearby mark, leaving the mark to port and the race committee vessel to starboard. This changes RRS 28.

## **11 THE FINISH**

The finishing line will be between a staff displaying a blue flag on the finishing mark at the starboard end and the course side of the port-end finishing mark.

## **12 PENALTY SYSTEMS**

For the Tornado class RRS 44.1, is changed so that the Two-Turns Penalty is replaced by the One-Turn Penalty.

### 13 TIME LIMITS AND TARGET TIMES

Time limits and target times are as follows:

<i>CLASS</i>	<i>TARGET TIME</i>	<i>FINISH WINDOW</i>	<i>TIME LIMIT</i>
Tornado	45 minutes	15 minutes	60 minutes

**13.1** Boats failing to finish within the Finish Window after the first boat sails the course and finishes will be scored Did Not Finish without a hearing. This changes RRS 35, A4 and A5.

### 14 PROTESTS AND REQUESTS FOR REDRESS

**14.1** Protest forms are available at the race office, located down stairs TYPBC. Protests and requests for redress or reopening shall be delivered there within the appropriate time limit.

**14.2** For the Tornado class, the protest time limit is 90 minutes after the last boat has finished the last race of the day or the race committee signals no more racing today, whichever is later.

**14.3** Notices will be posted no later than 30 minutes after the protest time limit to inform competitors of hearings in which they are parties or named as witnesses. Hearings will be held in the protest room, located in the hall downstairs TYPBC.

**14.4** Notices of protests by the race committee, technical committee or protest committee will be posted to inform boats under RRS 61.1(b).

**14.5** A list of boats that, under SI 13.3, have been penalised for breaking RRS 42 will be posted by the end of the protest time limit.

**14.6** Breaches of Sis 16, 19, 21, and 22 will not be grounds for a protest by a boat. This changes RRS 60.1(a).

On the last scheduled day of racing a request for redress based on a protest committee decision shall be delivered

(a) within the protest time limit if the requesting party was informed of the decision on the previous day;

(b) no later than 30 minutes after the party was informed of the decision on the day.

This changes RRS 62.2

## **15 SCORING**

**15.1** 5 races are required to be completed to constitute a series.

**15.2** a) When fewer than 6 races have been completed, a boat's series score will be the total of her race scores.

b) When 6 to 8 races have been completed, a boat's series score will be the total of her race scores excluding her worst score.

## **16 SAFETY REGULATIONS**

**16.1** Check –out and check –in ashore:

a) Competitors shall individually check out before racing by personally signing the check-out sheets located next to the official notice board located downstairs at TYPBC. [DP]

b) Competitors shall individually check-in immediately on returning to shore after racing, no later than the protest time limit by signing the check-in sheets located next to the official notice board located downstairs at TYPBC. [DP]

**16.2** A boat retiring from racing shall notify the Race Committee before leaving the racing area, or if that is not possible, shall notify the Race Office as soon as possible after returning ashore. [DP]

## **17 REPLACEMENT OF CREW OR EQUIPMENT**

**17.1** Substitution of competitors will not be allowed without prior written approval of the race committee. [DP]

**17.2** Substitution of damaged or lost equipment will not be allowed unless authorised by the race committee. Requests for substitution shall be made to the committee at the first reasonable opportunity. [DP]

## **18 EQUIPMENT AND MEASUREMENT CHECKS**

On the water, a boat can be instructed by a member of the race committee or the technical committee to proceed immediately to a designated area for inspection. Ashore, equipment may be inspected or measured at times specified in the class rules, the notice of race.

## **19 EVENT ADVERTISING**

Boats shall display event advertising supplied by the organising authority. [DP]

## **20 OFFICIAL BOATS**

Official boats will be marked with the club burgee

## **21 SUPPORT BOATS**

- 21.1** Except when requested to participate in rescue operations, team leaders, coaches, and other support persons shall stay outside areas where boats are racing and are restricted to a 5 knot speed limit, from the time of the preparatory signal for the first start of a sequence of starts until all boats have finished or the race committee signals a postponement or abandonment of all races. The areas the boats are racing in is defined as the area inside the course and within 100 metres of any mark, lay line, starting line, finishing line or any area where any boat that is racing is sailing or may sail. [DP]
- 21.2** Attention is drawn to the relevant local council bylaws regarding wearing of lifejackets and other restrictions.
- 21.3** When flag V (with a long sound signal) is displayed on a committee boat all support boats are requested to remain afloat and assist all sailors.
- 21.4** Support boats shall be marked with a flag provided by the Organising Authority. [DP]

## **22 RADIO COMMUNICATION**

Except in an emergency, a boat that is racing shall not make voice or data transmissions and shall not receive voice or data communication that is not available to all boats. This restriction also applies to mobile telephones. [DP]

## **23 PRIZES**

Prizes will be given as follows:

The Moore Trophy international B Class Catamaran New Zealand Championships

The Pro Marine Tornado Trophy Aluminium Masted Tornado Trophy New Zealand Championships for the first boat with a Aluminium mast

## **24 INSURANCE**

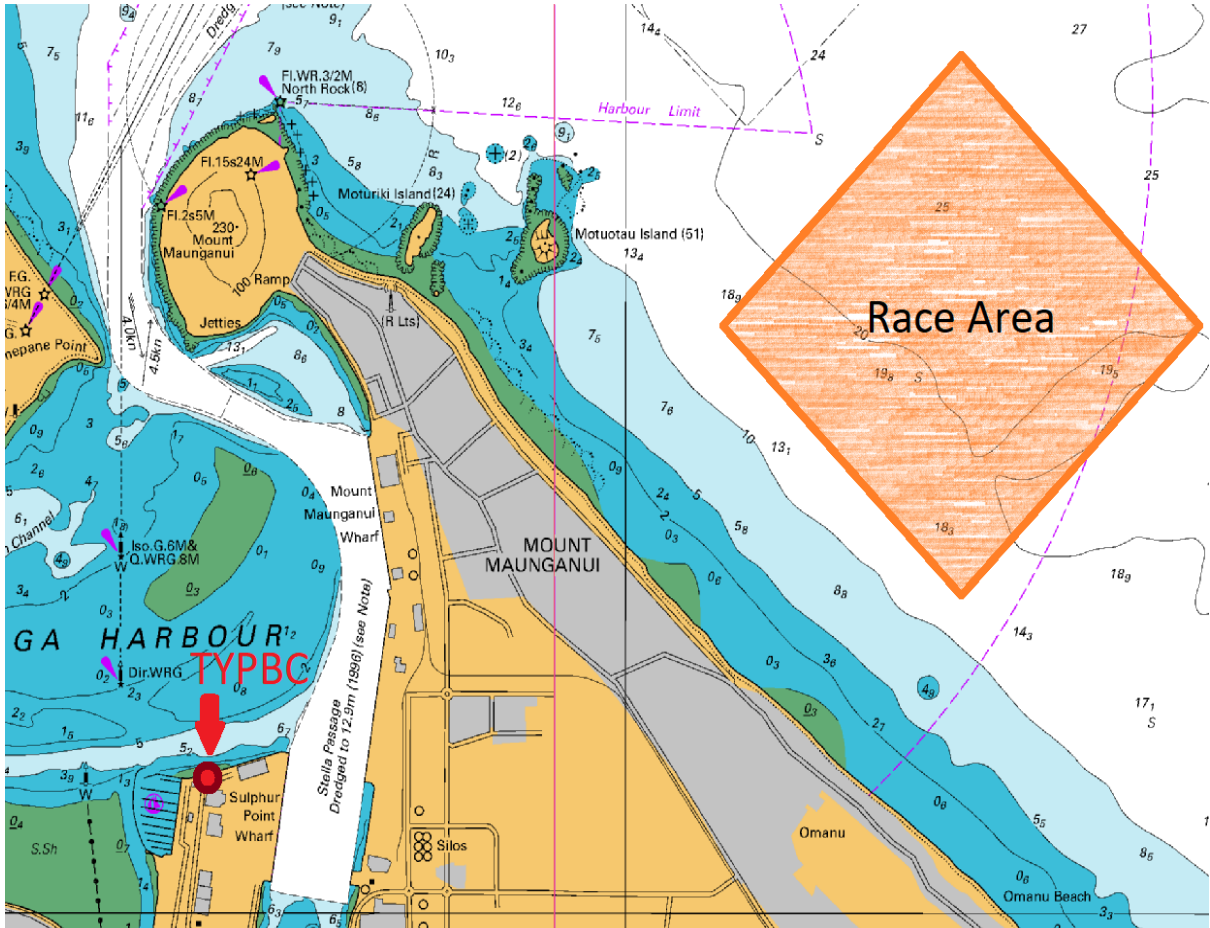
It is recommended each participating boat shall be insured with valid marine third-party liability insurance with a minimum cover of \$1,000,000 per incident or the equivalent. Certificate of insurance is to be presented at registration

## **25 DISCLAIMER OF LIABILITY**

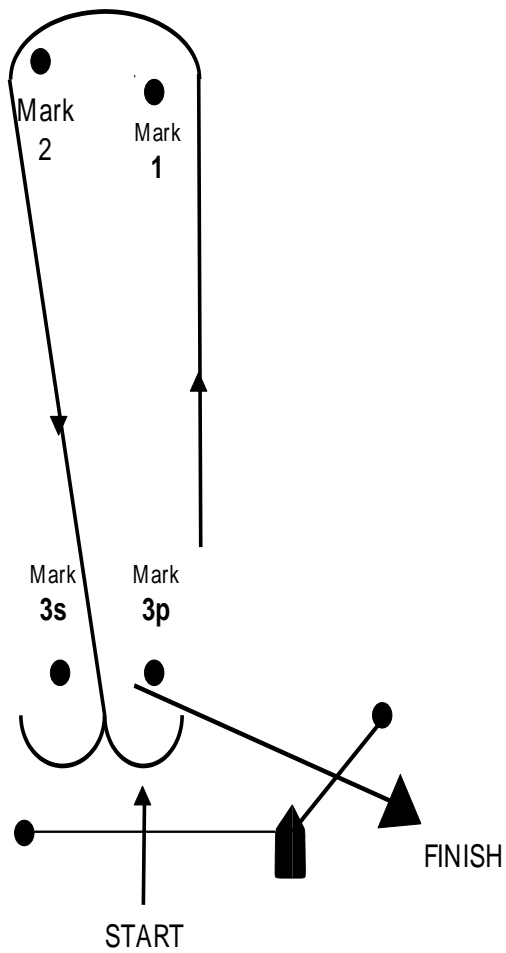
Competitors participate in the regatta entirely at their own risk. See RRS 3, Decision to Race. The organising authority will not accept any liability for material damage or personal injury or death sustained in conjunction with or prior to, during, or after the regatta.

# Attachment A

## ILLUSTRATING THE COURSE AREA



## Attachment B – Illustrating the Course



***W1 START, 1, 2, 3s/3p, 1,2, 3P, FINISH***

***W2 START, 1, 2, 3s/3p, 1, 2, 3s/3p, 1, 2, 3P, FINISH***

***W3 START, 1, 2, 3s/3p, 1, 2, 3s/3p, 1, 2, 3s/3p, 1, 2, 3P, FINISH***